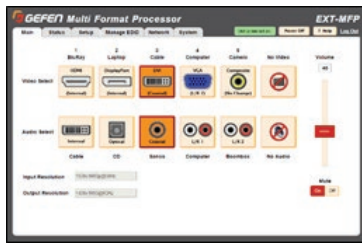


# GEFEN

## Multi-Format Processor



Intuitive and Powerful  
Web Server Interface



EXT-MFP



### Switch, convert, and scale today's most advanced and legacy AV formats

The Gefen EXT-MFP Audio/Video Multi-Format Processor is a compact and powerful presentation switcher with cutting edge format conversion and scaling abilities. It supports input and output resolutions up to 1080p Full HD and 1920 x 1200 (WUXGA), with HDCP. Its unique features include an intuitive and elegant web server interface, an easy-to-use On Screen Display (OSD), IP (Telnet and UDP) control, RS-232 control, IR control, independently password-protected user and administrator access, advanced EDID management, a wide variety of video inputs including Mac and PC compatible DisplayPort, independent and configurable audio and video routing, input selection via contact closure, assignable input naming, and a compact form factor that can be surface or rack mounted, or placed on a shelf. The EXT-MFP features full compatibility with the Gefen Syner-G™ software, including Discovery, Show-Me, and IP configuration. It is a complete and cost-effective solution for managing video and audio in classrooms, conference rooms, command centers, and as the backbone of any other high performance system that needs to interface with multiple sources, AV formats, and resolutions in a dynamic environment.

### How It Works

If this product will be placed on a shelf, attach the included rubber feet to the bottom of the unit. If two units are to be mounted in a standard 19-inch wide rack, use the Gefen EXT-RACK-1U-GRY rack tray (available separately). Attach the EXT-MFP to the rack tray using the two machine screws provided. It can also be mounted on a surface using the L-brackets provided. The following inputs are available on the EXT-MFP: HDMI, DVI, DisplayPort, VGA, and Composite Video. Connect them to compatible AV or video sources, using high quality cables specific to each format and resolution. Connect up to two displays, projectors, or downstream equipment to the HDMI and DVI outputs. Connect up to two digital audio sources to TOSLINK® Optical and S/PDIF Coaxial inputs. Connect up to two analog audio sources to the L/R 1 and L/R 2 inputs using 3.5mm mini-stereo cables. Connect a pair of L/R RCA cables from Audio Out to the input of a 2-channel power amplifier. To select inputs via contact closure, wire the relays from an automation control device to the 6-pin Phoenix quick-disconnect plug and connect it to the Input Control port of the Multi-Format Processor. This product can be set up and operated via the front panel push buttons or the included IR remote control, in conjunction with its on screen menu system. It can also be configured and controlled through its web server interface, Telnet, UDP, or RS-232. To control the unit via IR, point the handheld remote towards the front panel of the unit. If the processor is not located within the line of sight of the handheld remote, connect a Gefen EXT-RMT-EXTIRN IR Extender to the IR Ext port and install it in a location where it can receive the IR commands. To facilitate independent IR control of multiple units installed in close proximity, the remote and the EXT-MFP can be configured to work with four distinct sets of IR codes. For IP control, connect a CAT-5 cable from your Local Area Network to the IP Control port. For RS-232 control, connect a DB-9 cable from the RS-232 port to an automation control device. Connect the included power supply to the 12V DC power supply jack and to an available electrical outlet. Press and release the Power button to toggle between On and Standby modes. When the processor is on, the Power LED will glow in blue. A red power LED indicates that the unit is in Standby. The audio/video LED indicators on the front of the processor will glow bright green when the corresponding input is selected.



This product has been specifically designed for use with the Gefen Syner-G™ Software Suite, available for download at [www.gefen.com](http://www.gefen.com). The Gefen Syner-G™ Discovery and Show-Me features simplify initial IP configuration.

Gefen, LLC

20600 Nordhoff Street, Chatsworth CA 91311

Tel. (818) 772-9100 (800) 545-6900 Fax (818) 772-9120

[www.gefen.com](http://www.gefen.com)

### Features\*

- Independent and configurable audio and video routing
- Supports input and output resolutions up to 1080p Full HD & 1920 x 1200 (WUXGA)
- HDCP compliant
- HDMI, DisplayPort, DVI, VGA, and Composite Video inputs
- DisplayPort input is compatible with Mac and PC computers
- TOSLINK® optical digital, S/PDIF coaxial digital, and two analog L/R audio inputs
- Each audio source can be independently assigned to any video source
- Audio sources can be temporarily switched away from their assigned video sources
- On-screen display (OSD) menu and web server interface allow easy set-up & control
- IP control via Telnet, UDP, and web server interface
- RS-232 Serial interface for use with an automation control system
- Independent IR control of up to four units in proximity, using distinct command sets
- Password-protected user and administrative access
- Advanced EDID Management for rapid integration of sources and displays
- Assignable input naming
- System Configuration Upload/Download function
- Plug-and-Play installation with little to no set-up
- USB Mini-B port for use with Gefen Syner-G™
- Locking power supply connector
- Rack-mountable using EXT-RACK-1U-GRY (available separately)
- Surface-mountable using the included L-brackets

### Specifications\*

- Maximum Pixel Clock: 165 MHz
- Maximum TMDS Clock: 225 MHz
- Video Input Connectors:
  - (1) HDMI Type A 19-pin, female, locking
  - (1) DisplayPort, 20-pin, female
  - (1) DVI-I, 29-pin, female, digital only
  - (1) VGA HD-15, female
  - (1) Composite, RCA-type, female
- Audio Input Connectors:
  - (2) 3.5mm mini-stereo jack
  - (1) TOSLINK® optical, female
  - (1) S/PDIF Coaxial, RCA-type, female
- Video Output Connectors:
  - (1) HDMI Type A 19-pin, female, locking
  - (1) DVI-I, 29-pin, female, digital only
- Audio Output Connectors: RCA x 2
- USB Connector: (1) Mini-B
- IR Sensor: (1) on front panel
- IR Extender Port: (1) 3.5mm mini-stereo jack
- IR Extender Type: EXT-RMT-EXTIRN
- Input Selection Contact Closure Connector: 6-pin Phoenix quick-disconnect
- IP Port: (1) RJ-45 jack
- RS-232 Port: (1) DB-9, female
- Input Select Button: (1) tact-type
- Power/Stand-by Button: (1) tact-type
- Power/Standby Indicator: (1) bi-color LED, blue/red
- Video Input Indicators: (5) LEDs, green
- Audio Input Indicators: (5) LEDs, green
- Power Supply Connector: (1) 3-pin, locking
- Power Supply: 12V DC
- Power Consumption: 8.5W maximum
- Operating Temperature: +32 to +122 °F (0 to +50 °C)
- Operating Humidity: 5% to 90% RH, non-condensing
- Storage Temperature: -4 to +185 °F (-20 to +85 °C)
- Storage Humidity: 0% to 95% RH, non-condensing
- MTBF: 50000 hours
- Dimensions (excluding buttons & connectors, W x H x D):
  - 8.4" x 1.6" x 8.5" (213mm x 41mm x 216mm)
- Net Unit Weight: 3.2 lbs (1.5 kg)

\* Features and specifications are subject to change without notice.

All trademarks and registered trademarks are the property of their respective owners.

Copyright© 2014 Gefen LLC

VER A4